

GUIALMI



Fabric

Fabric Samples Guide

A1. Mira

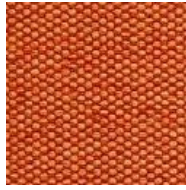
CARLOS NATAL



MI13 | 8003



MI25 | 8004



MI39 | 8008



MI17 | 8006



MI23 | 8010



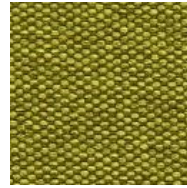
MI61 | 8014



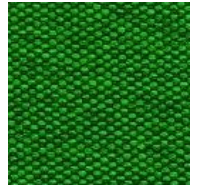
MI30 | 8025



MI55 | 8013



MI10 | 8009



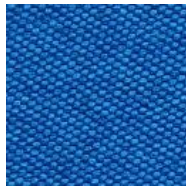
MI22 | 8024



MI15 | 8016



MI51 | 8001



MI06 | 8021



MI05 | 8023



MI37 | 8022

Name	FABRICS
Composition	100% Polyester
Width	148 cm
Weight	300 g/m ² (±5%)
Abrasion resistance	100,000 Cycles
Light resistance	ISO 105-B02: 4 a 5
Fire resistance	EN 1021-1:2006 BS 5852:2006
Rubbing resistance	ISO 105-X12 Dry: 4 / Wet: 5
Pilling	ISO 12945-2:5

A2. Heritage ELASTRON



HT39 | 1051



HT17 | 1048



HT03 | 1056



HT23 | 1055



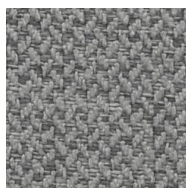
HT40 | 1045



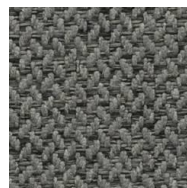
HT25 | 1050



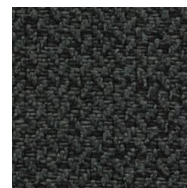
HT68 | 1054



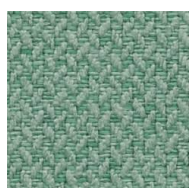
HT14 | 1062



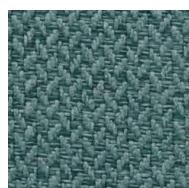
HT65 | 1046



HT69 | 1063



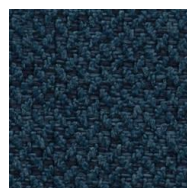
HT70 | 1061



HT27 | 1060



HT46 | 1058



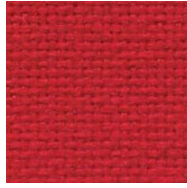
HT51 | 1057

Name	FABRICS
Composition	100% Polyester
Width	140 cm
Weight	378 g/m ² (±5%)
Abrasion resistance	90,000 Cycles
Light resistance	ISO 105-B02: 5
Fire resistance	EN 1021-1 BS 5852
Rubbing resistance	EN ISO 105-X12 Dry: 4 / Wet: 5
Pilling	ISO 12945-2:5

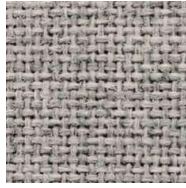
B1. Citadel CAMIRA



BC04 | 801



BC05 | 076



BC55 | 832



BC28 | 833



BC15 | 019



BC65 | 821



BC25 | 822



BC69 | 824



BC32 | 830



BC45 | 829



BC98 | 828



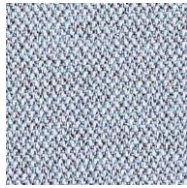
BC07 | 010

Name	FABRICS
Composition	100% Polypropylene
Width	140 cm
Weight	230 g/m ² (±5%)
Abrasion resistance	30,000 Cycles
Light resistance	BS EN ISO 105-B02:2014-BS6
Fire resistance	BS EN 1021-1 & 2
Rubbing resistance	ISO 105-X12 Dry: 4 / Wet: 4

B2. Era CAMIRA



ER56 | CSE46



ER49 | CSE39



ER33 | CSE42



ER41 | CSE34



ER98 | CSE16



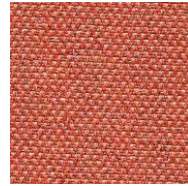
ER11 | CSE31



ER18 | CSE03



ER01 | CSE27



ER36 | CSE26



ER39 | CSE29



ER25 | CSE01



ER40 | CSE02



ER20 | CSE21



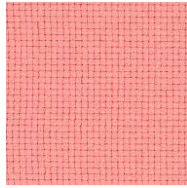
ER15 | CSE14

Name	FABRICS
Composition	100% Polyester
Width	140 cm
Weight	300 g/m ² (±5%)
Abrasion resistance	100,000 Cycles
Light resistance	ISO 105-B02: 5
Fire resistance	BS EN 1021-1 & 2
Rubbing resistance	ISO 105-X12 Dry: 4 / Wet: 4

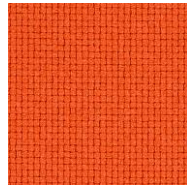
D1. Go Uni GABRIEL



GU04 | 64172



GU34 | 64183



GU39 | 63080



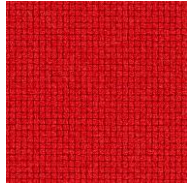
GU02 | 61138



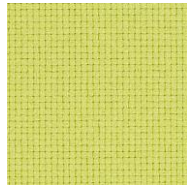
GU56 | 61139



GU15 | 60999



GU05 | 64171



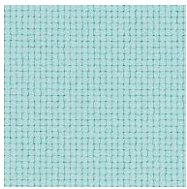
GU10 | 68170



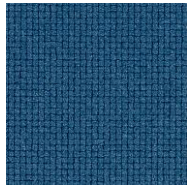
GU23 | 61142



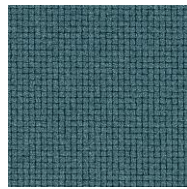
GU12 | 68169



GU74 | 68168



GU06 | 66139



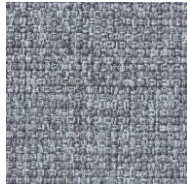
GU45 | 67071

Name	FABRICS
Composition	100% Trevira cs
Width	140 cm
Weight	435 g/m ² (±5%)
Abrasion resistance	100,000 Cycles
Light resistance	8 EN ISO 105-B02
Fire resistance	EN 1021-1 & 2
Rubbing resistance	ISO 105-X12 Dry: 4 / Wet:5
Pilling	5 UNE EN ISO 12945-2

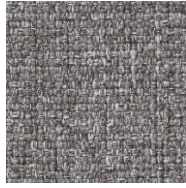
D2. Medley GABRIEL



ME55 | 60003



ME14 | 66008



ME28 | 60167



ME61 | 60004



ME69 | 60999



ME65 | 62054



ME40 | 67002



ME23 | 68005



ME17 | 61003



ME54 | 61004



ME38 | 63063



ME39 | 63016



ME37 | 64019



ME35 | 63064



ME99 | 65011



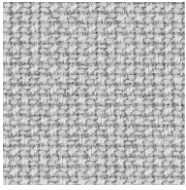
ME45 | 67006



ME51 | 66010

Name	FABRICS
Composition	100% Polyester
Width	140 cm
Weight	510 g/m ² (±5%)
Abrasion resistance	75,000 Cycles
Light resistance	8 EN ISO 105-B02
Fire resistance	EN 1021-1 & 2
Rubbing resistance	ISO 105-X12 Dry: 4 / Wet:5
Pilling	4 ISO 12945-2

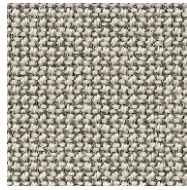
D3. Cura GABRIEL



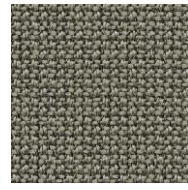
DC55 | 60000



DC51 | 66166



DC31 | 60112



DC28 | 60110



DC15 | 60999



DC25 | 61232



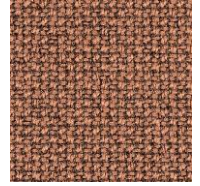
DC69 | 61169



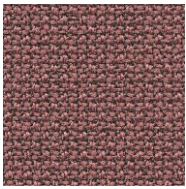
DC23 | 62126



DC65 | 62083



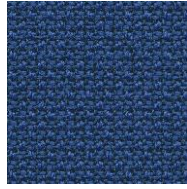
DC83 | 61257



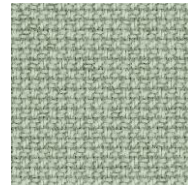
DC99 | 64195



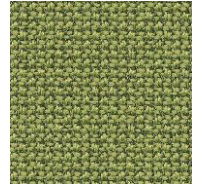
DC54 | 66170



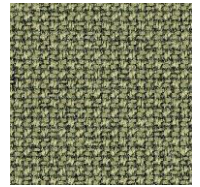
DC63 | 65105



DC56 | 68262



DC98 | 68181



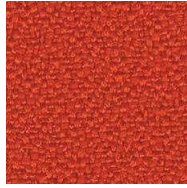
DC40 | 68261

Name	FABRICS
Composition	98% Post-customer recycled polyester 2% Polyester
Width	140 cm
Weight	420 g/m ² (±5%)
Abrasion resistance	100,000 Cycles
Light resistance	8 ISO 105-B02
Fire resistance	EN 1021-1 & 2
Rubbing resistance	ISO 105-X12 Dry: 4 / Wet:5
Pilling	5 ISO 12945-2

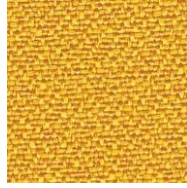
D4. Xtreme CAMIRA



DX01 | YS108



DX19 | YS076



DX18 | YS072



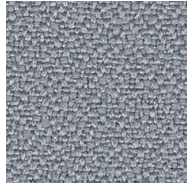
DX03 | YS168



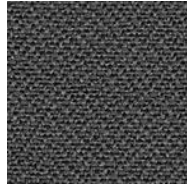
DX62 | YS079



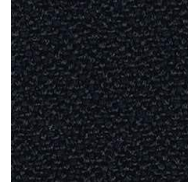
DX23 | YS077



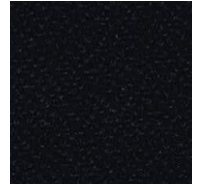
DX31 | YS094



DX52 | YS081



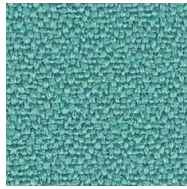
DX17 | YS145



DX15 | YS009



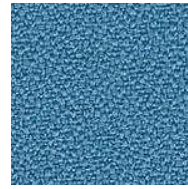
DX12 | YS159



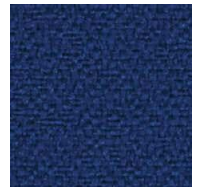
DX27 | YS074



DX54 | YS026



DX96 | YS073



DX06 | YS082

Name	FABRICS
Composition	100% Post-customer recycled polyester
Width	140 cm
Weight	310 g/m ² (±5%)
Abrasion resistance	100,000 Cycles
Light resistance	6 ISO 105-B02
Fire resistance	EN 1021-1 BS 5852
Rubbing resistance	EN 1021-1 & 2

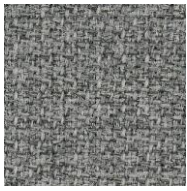
GUIALMI



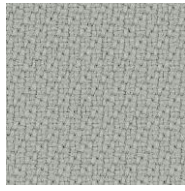
Fabric

Fabric Samples Guide

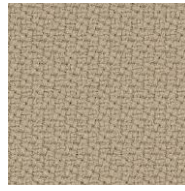
E1. Step GABRIEL



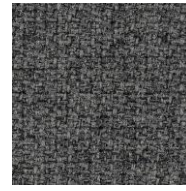
ES28 | M60004



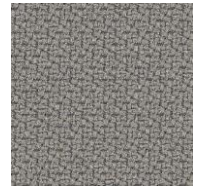
SS31 | 60004



SS02 | 61149



ES61 | M60011



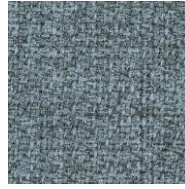
SS52 | 60011



ES51 | M66152



SS07 | 66764



ES14 | M67004



ES53 | M64159



SS27 | 68121



ES17 | M63136



SS47 | 63736



ES25 | M62144



SS49 | 62744



ES65 | M62146



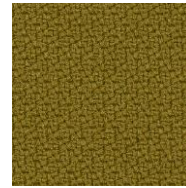
SS65 | 62057



ES69 | M61103



ES23 | M68301



SS46 | 68165



ES40 | M68165



SS15 | 60999

Name	FABRICS
Composition	100% Trevira cs
Width	140 cm
Weight	470 g/m ² (±5%)
Abrasion resistance	100,000 Cycles
Light resistance	8 EN ISO 105-B02
Fire resistance	EN 1021 1 & 2 BS 5852
Rubbing resistance	ISO 105-X12 Dry: 4 / Wet:5
Pilling	5 UNE EN ISO 12945-2

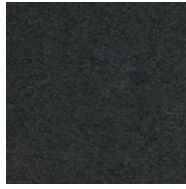
F1. Blazer CAMIRA



CZ21 | CUZ4X



CZ14 | CUZ4W



CZ52 | CUZ12



CZ20 | CUZ4R



CZ49 | CUZ4U



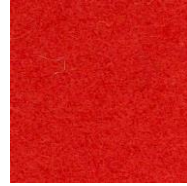
CZ10 | CUZ53



CW40 | CUZ1K



CZ23 | CUZ2W



CZ19 | CUZ39



CW31 | CUZ2Q



CW14 | CUZ28



CW69 | CUZ1E



CW43 | CUZ30



CZ05 | CUZ18



CZ37 | CUZ13



CW51 | CUZ62



CZ74 | CUZ2Z



CZ12 | CUZ1N



CZ46 | CUZ3A

Name	FABRICS
Composition	100% Virgin Wool
Width	140 cm
Weight	460 g/m ² (±5%)
Abrasion resistance	45,000 Cycles
Light resistance	4-6 ISO 105-B02
Fire resistance	EN 1021 1 & 2
Rubbing resistance	SO 105-X12 Dry: 4 / Wet:4
Pilling	ISO 12945-2:5

F2. Select GABRIEL



SL69 | 60134



SL31 | 60129



SL02 | 61188



SL65 | 62098



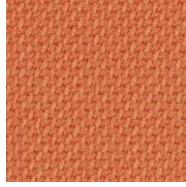
SL36 | 62100



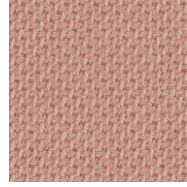
SL49 | 62097



SL39 | 63102



SL19 | 63101



SL34 | 64213



SL03 | 64215



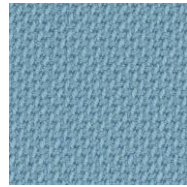
SL80 | 64214



SL46 | 67093



SL23 | 62104



SL33 | 66191



SL54 | 66071

Name	FABRICS
Composition	85% New Zealand wool 15% Polyamide
Width	140 cm
Weight	510 g/m ² (±5%)
Abrasion resistance	200,000 Cycles
Light resistance	8 EN ISO 105-B02
Fire resistance	EN 1021 1 & 2 BS 5852 0 & 1
Rubbing resistance	EN ISO 105-X12 Dry: 4 / Wet:5
Pilling	4 UNE EN ISO 12945-2

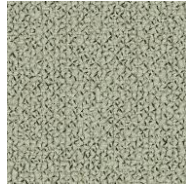
F3. Grain GABRIEL



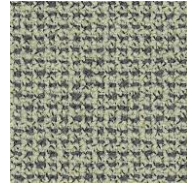
GN02 | 61252



GN17 | 61253



GN13 | 60302



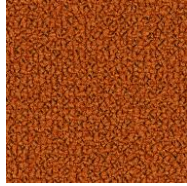
GN14 | 60322



GN52 | 60324



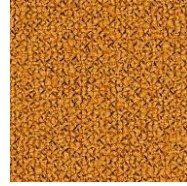
GN38 | 63118



GN39 | 63117



GN65 | 62121



GN18 | 62016



GB69 | 60325



GN01 | 62122



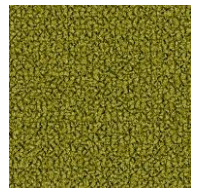
GN10 | 62123



GN40 | 61037



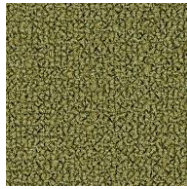
GN41 | 61255



GN22 | 68257



GN61 | 68259



GN12 | 68243



GN98 | 68258

Name	FABRICS
Composition	<u>2287</u> 92% Post-customer recycled polyester 8% Polyester
	<u>2288</u> 80% Post-customer recycled polyester 20% Polyester
Width	140 cm
Weight	615 g/m ² (±5%)
Abrasion resistance	100,000 Cycles
Light resistance	5-7 ISO 105-B02
Fire resistance	EN 1021 1 & 2 BS 5852 0 & 1
Rubbing resistance	EN ISO 105-X12 Dry: 4 / Wet:5
Pilling	5 ISO 12945-2

PU leather. Valencia

SPRADLING



SV49 | 8032



SV82 | 1049



SV02 | 4044



SV36 | 0002



SV97 | 0035



SV96 | 2116



SV76 | 2117



SV68 | 4001



SV16 | 4041



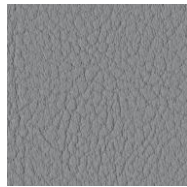
SV07 | 2108



SV15 | 9035



SV52 | 4003



SV30 | 4045



SV04 | 2074

Name	PU LEATHER
Composition	Topcoat: 100% Vinyl Backing: 100% Polyester
Width	137 cm
Weight	650 g/m ² (±5%)
Abrasion resistance	300,000 Cycles
Fire resistance	EN 1021 1 & 2

PU leather. Real

CARLOS NATAL



SR81 | 7015



SR82 | 7017



SR96 | 7031



SR83 | 7011



SR97 | 7010



SR20 | 7032



SR66 | 7002



SR37 | 7018



SR73 | 7023



SR16 | 7020



SR15 | 7001



SR38 | 7009



SR67 | 7024



SR23 | 7012



SR10 | 7036



SR06 | 7006

Name	PU LEATHER
Composition	Topcoat: 100% Vinyl Backing: 100% PES F-SEA
Width	140 cm
Weight	770 g/m ² (±5%)
Abrasion resistance	350,000 Cycles
Light resistance	EN ISO 105-B02: 5
Fire resistance	EN 1021 1 & 2

Leather.



SE00 | 510



SE82 | 404



SE47 | 325



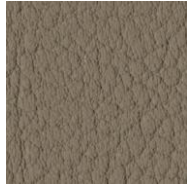
FA57 CALVADOS



FA97 AMARETTO



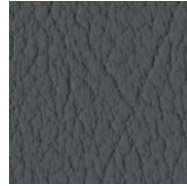
SE20 | 412



SE36 | 407



SE58 | 408



SE13 | 463



SE15 | 112



SE05 | 027

Name	LEATHER
Composition	100% Leather
Thickness	1,00 mm ($\pm 0,02$ mm)
Abrasion resistance	50,000 Cycles
Light resistance	UNI EN ISO 105-B02
Fire resistance	UNI EN ISO 1021 1 & 2
Rubbing resistance	Dry: 4 DIN53339 / Wet: 4-5 DIN53339