

GUIALMI



K40

Task Chair

The K40 seat is carefully designed to achieve maximum performance in all postures, while focusing solely on the essential functions of a task chair.

When you sit for long periods of time, your body needs to move naturally.

The K40 adapts perfectly to these movements, helping you maintain comfort and proper posture.

K40

GUIALMI



K40

Authentic and sober design, the K40 reflects a timeless design philosophy. A chair should not only embody style, but also prioritize ergonomics. This philosophy is the foundation of the K40 project.

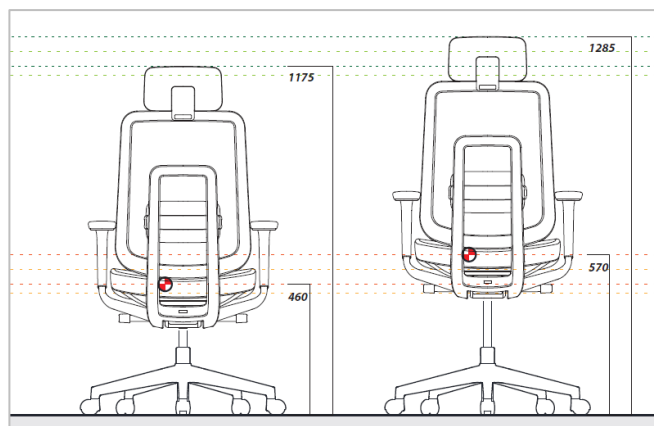
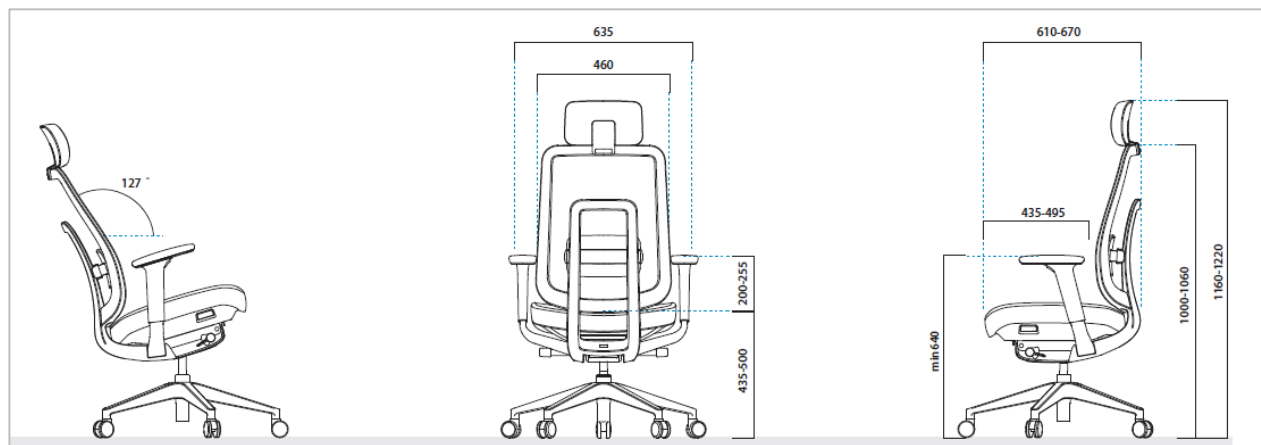
GUIALMI



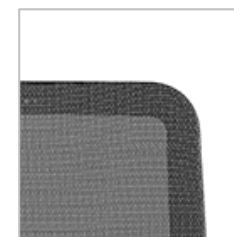


GUALMI

K40



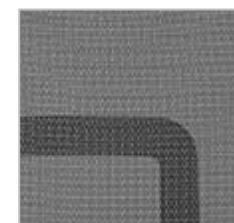
K40 Measures



Black PP injection.



Black base.



Black mesh
backrest.



Injected foam seat.

K40 Finishes

K40 Task Chair

The **K40 chair** is designed with maximum attention to detail to deliver top performance in every posture — while focusing only on the essential functions of a chair.

As time passes while seated, your body needs to move naturally. The K40 adapts perfectly to these movements, helping you maintain comfort and proper posture.

With an authentic and discreet design, the K40 reflects a **timeless design philosophy**.

A chair should not only represent style but also prioritize ergonomics — this philosophy is the foundation of the K40 project.

K40 Main Features

- Gas lift.
- 3D intelligent lumbar support**, adjustable in height, depth, and angle to dynamically adapt to your sitting position.
- Ergonomic headrest**, fully adjustable for precise and comfortable support.
- Seat depth adjustment** for better comfort and thigh and leg support.
- 4D fully adjustable armrests**, adapting to every movement.
- Mechanism:**
- Synchronized tilt mechanism**.
- Medium backrest** in black polypropylene mesh.
- Black PP structure**.
- 4D armrests**.
- Seat slide adjustment**.
- 3D lumbar support**.
- Adjustable backrest tension**.
- Optional height-adjustable headrest**, always in synthetic leather.

K40 Finishes

- Injection-molded **black polypropylene (PP)**.
- Black base** with wheels suitable for both hard and soft floors.
- Black mesh backrest**.
- Injected foam seat**, upholstered in **fabric range D**.

Available upholsteries (see GUALMI upholstery catalog):

- **GoUni (Gabriel)**
- **Xtreme (Camira)**
- **Era (Camira)**
- **Step (Gabriel)**
- **Citadel (Camira)**

K40 Mechanisms

Left lever:

- Lock the backrest at the desired angle by turning the lever counterclockwise.
- To unlock, turn the lever clockwise and slightly push the backrest backward. (*Anti-return function.*)

Right lever:

- Push up the flat lever on your right to adjust seat height.
 - While standing: the seat rises.
 - While sitting: the seat lowers.
- Adjust tilt tension by turning the lever:
 - Clockwise: increases tension.
 - Counterclockwise: decreases tension.
- Adjust seat depth by pulling the lever under the right side of the seat.
 - While pulling, slide the seat forward to increase depth.
 - To return to the original position, sit slightly upright and pull the lever again.

Headrest adjustment:

- Slide the headrest up or down to adjust height.

Armrest adjustment:

- Adjust height by pressing the button under the armrest.
- Adjust armrest position in 3 additional ways without pressing any buttons.

Synchronized Tilt Mechanism

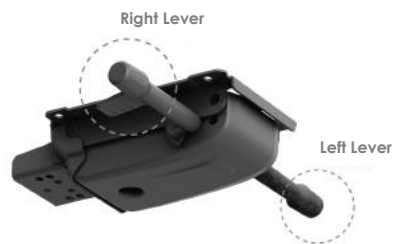
- 4-position angle adjustment (left lever).
- 3-position tilt tension adjustment (right lever).
- Height adjustment (right lever).

K40 Dimensions

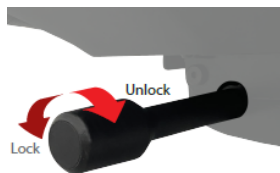
(see drawings on this pdf)

K40 Mechanism

Synchronized Tilt Mechanism



Left lever:



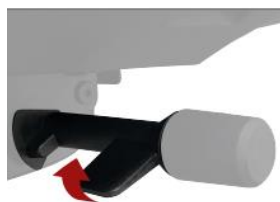
Lock the backrest at the desired angle by turning the lever counterclockwise. To unlock, turn the lever clockwise and slightly push the backrest backward. (anti-return function.)

Right lever:



Push up the flat lever on your right to adjust seat height. While standing: the seat rises. While sitting: the seat lowers. Adjust tilt tension by turning the lever: Clockwise: increases tension. Counterclockwise: decreases tension.

Right lever:



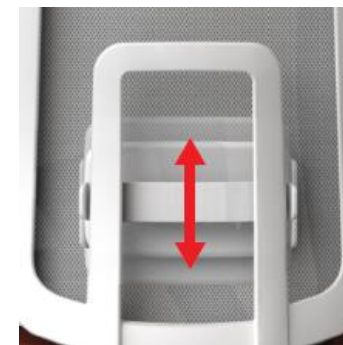
Push up the flat lever on your right to adjust seat height. While standing: the seat rises. While sitting: the seat lowers.



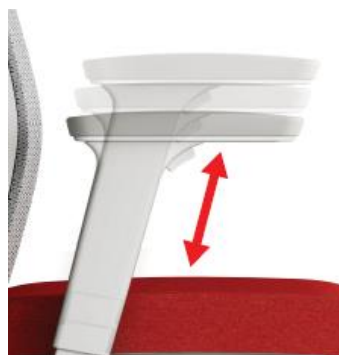
Slide the headrest up or down to adjust height.



Adjust seat depth by pulling the lever under the right side of the seat. While pulling, slide the seat forward to increase depth. To return to the original position, sit slightly upright and pull the lever again.



3 dimensional lumbar support adjustment.



Armrest adjustment: Adjust height by pressing the button under the armrest.



Adjust armrest position in 3 additional ways without pressing any buttons.

GUIALMI

Headrest with height adjustment. Optional.

Black structure.

Lumbar support 3D (height / depth / angle).

Armrest 4D.

Synchronized tilting mechanism. 4 steps angle adjustment.

Backrest with black polypropylene mesh.

Seat depth adjustment.

Backrest tension adjustment.



Contacts

GUIALMI
Apartado 1
3754-908 Aguada de Cima
Portugal
Tel.: 00 351 234 660 600
Fax.: 00 351 234 666 906
www.guialmi.pt

K40

Task Chair



GUIALMI

WEB SITE
www.guialmi.pt

FACEBOOK
[guialmi_office](https://www.facebook.com/guialmi_office)

E_MAIL
guialmi@guialmi.pt

YOUTUBE
[Guialmi Official](https://www.youtube.com/GuialmiOfficial)

LINKEDIN
[Guialmi](https://www.linkedin.com/company/Guialmi)